

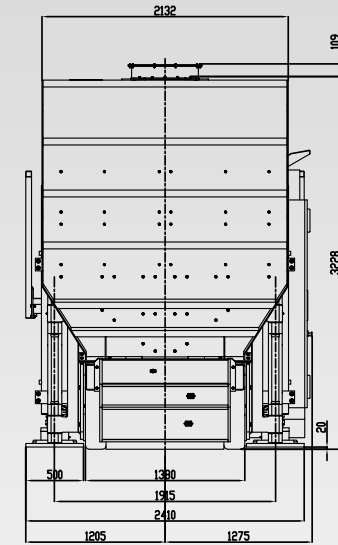
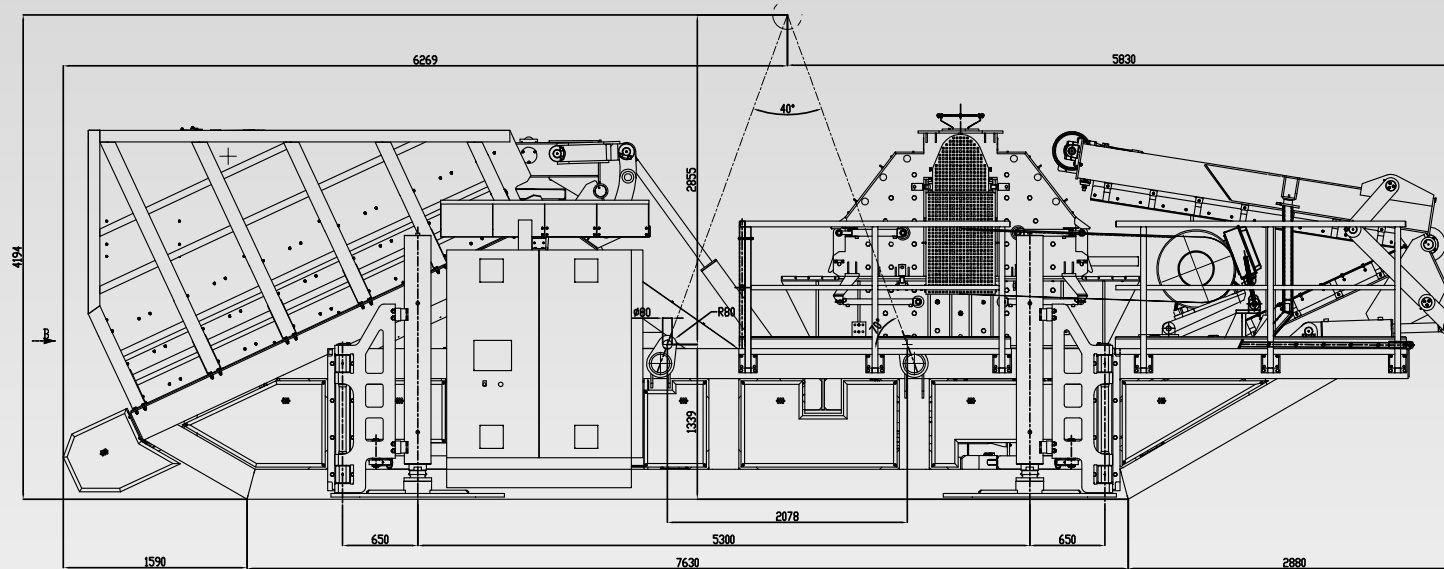
# Rocky Transformer Sand Crusher



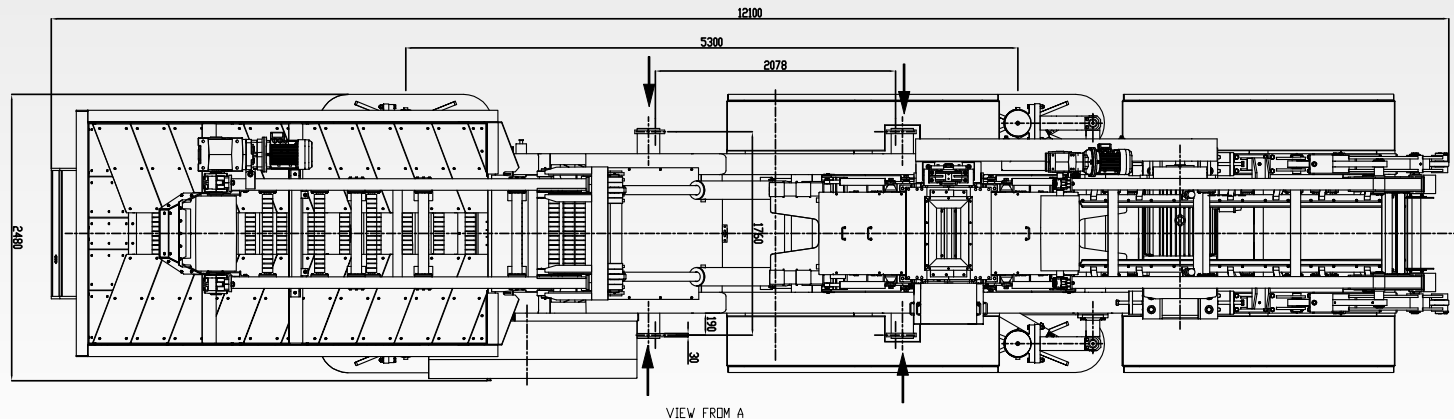
Presentation Created by RAF S.p.A

# RockyTransformer - Lifting Scheme

## Sand Crusher



VIEW FROM B

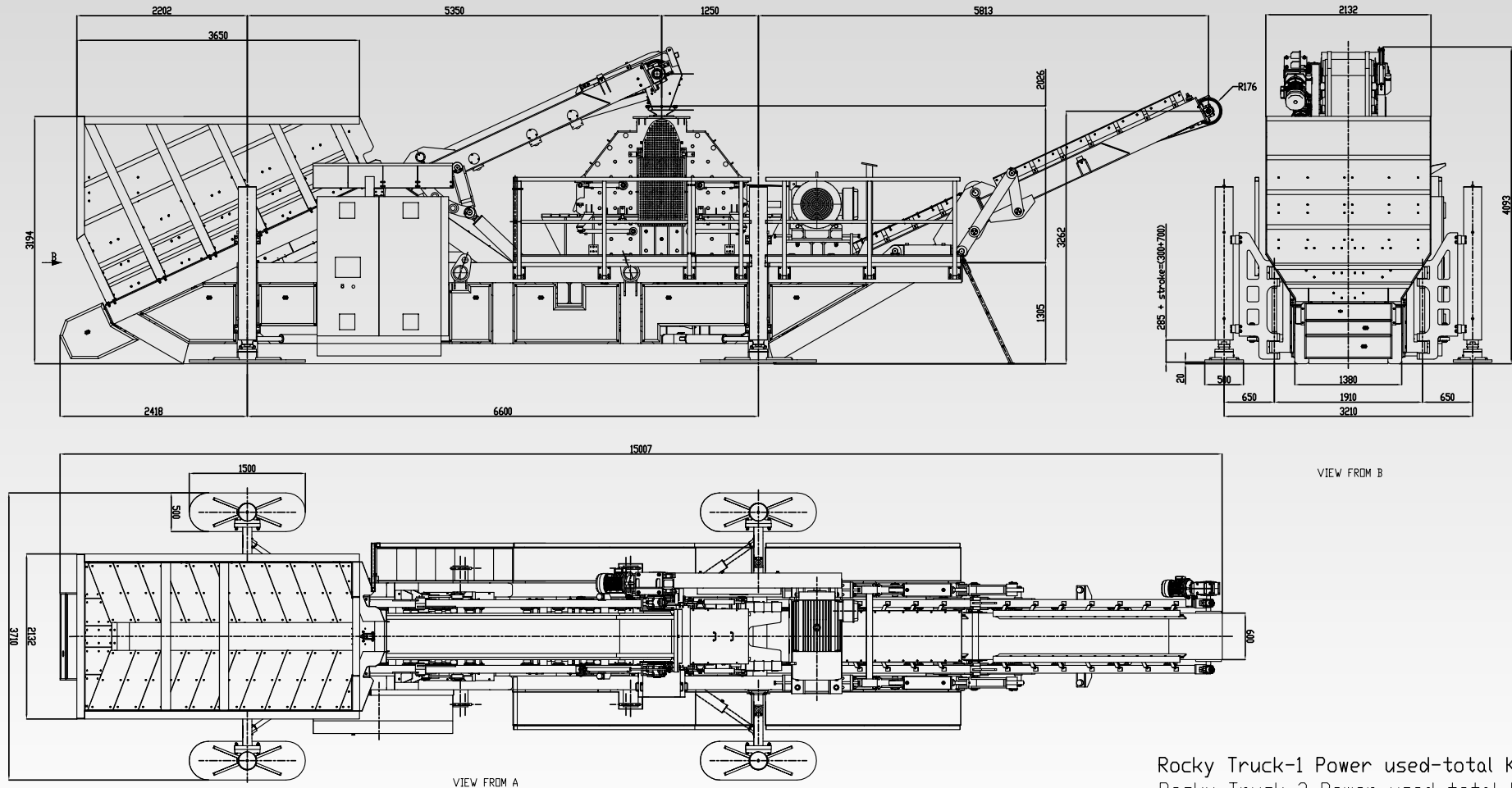


VIEW FROM A

Rocky-Truck-1 Weight Kg.34000  
Rocky-Truck-2 Weight Kg.35000

# RockyTransformer - Overall dimensions

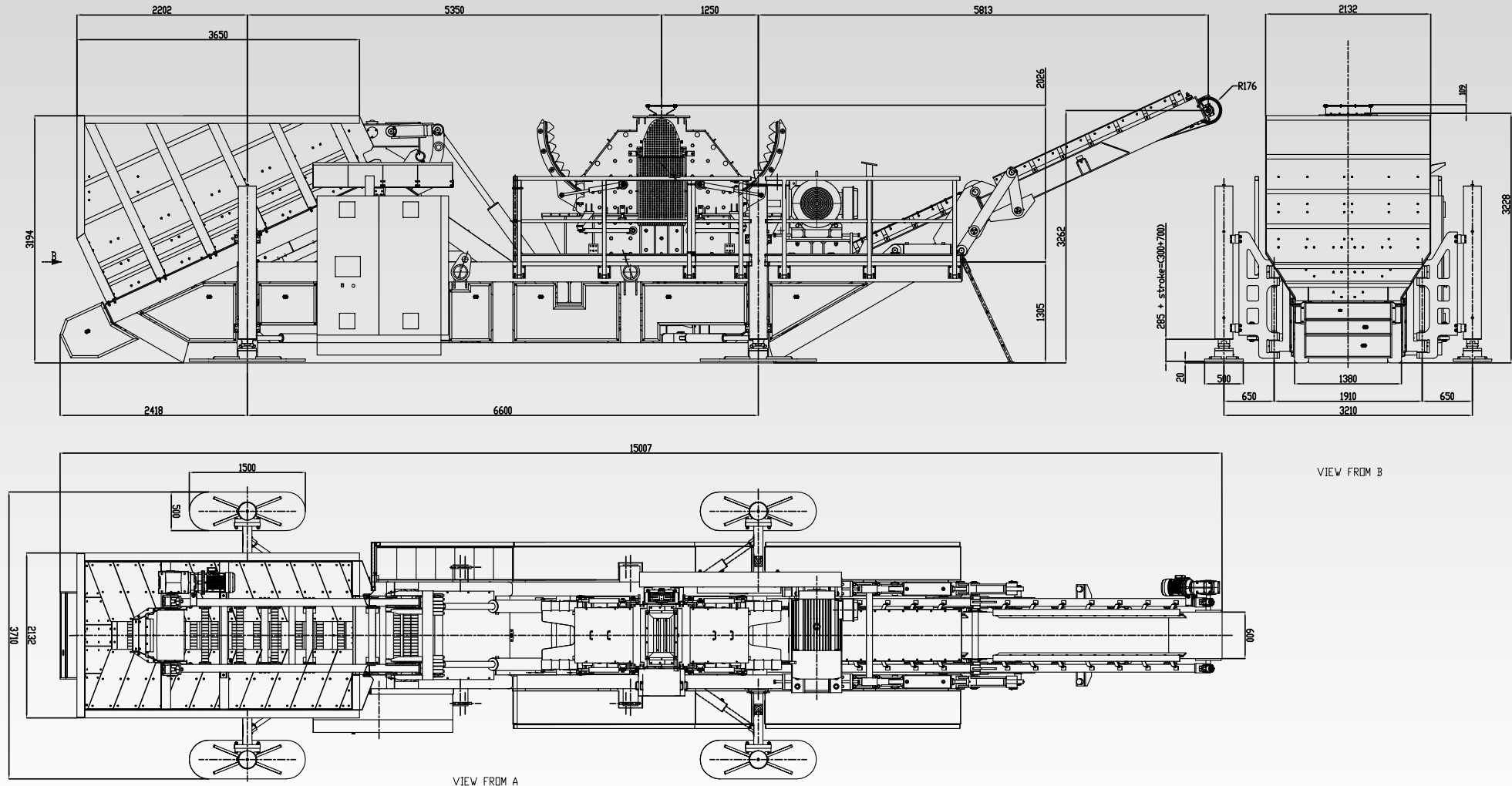
## Sand Crusher



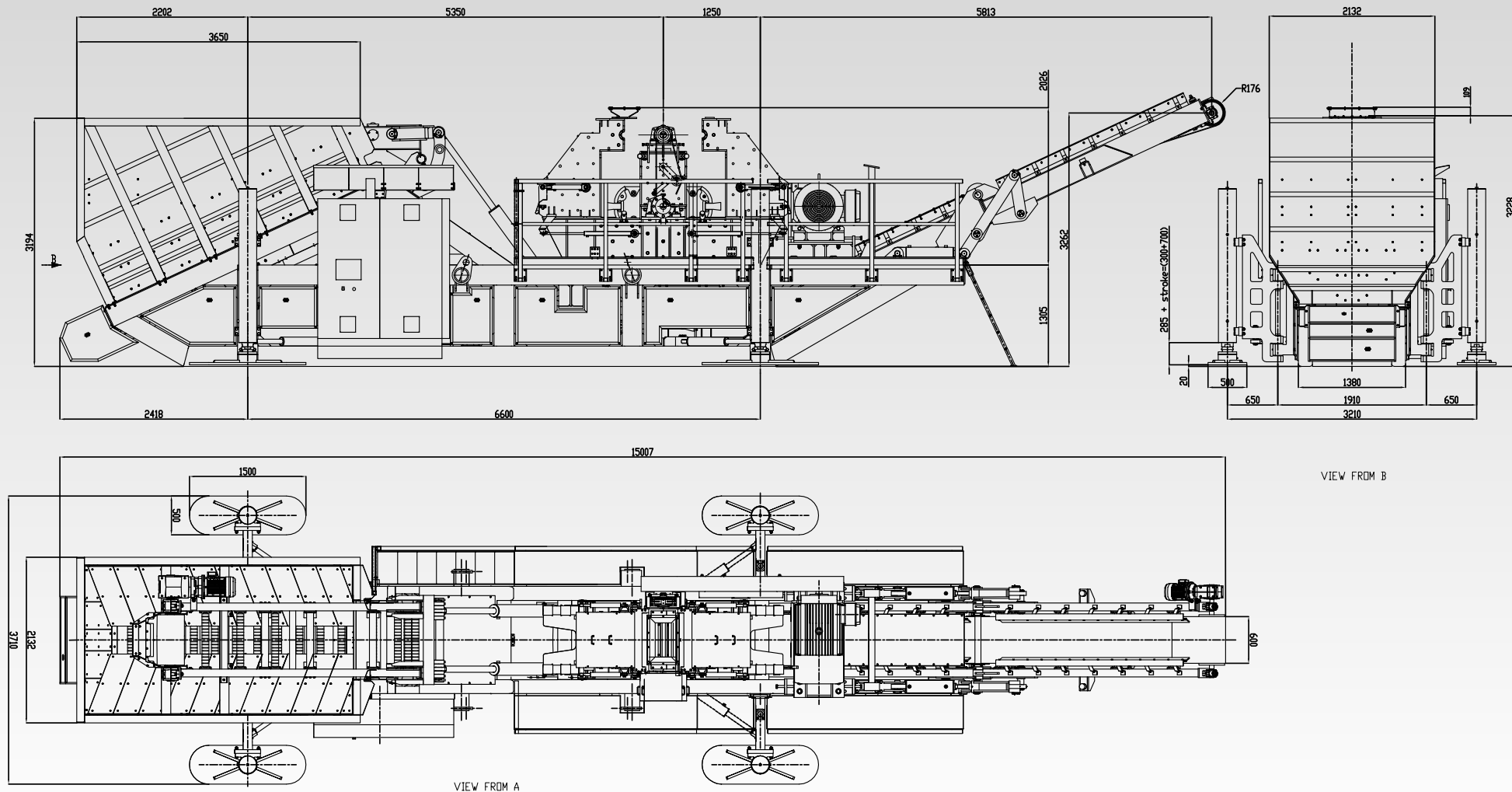
Rocky Truck-1 Power used-total Kw 158  
Rocky Truck-2 Power used-total Kw 186

# RockyTransformer - Maintenance configuration

## Sand Crusher







# How It Works

FEED MATERIAL

Crusher By - Product/ Sized Material



ROCKY TRANSFORMER EHSI SAND CRUSHER

5 - 8 mm (5 - 30 mm) Minus Feed Size



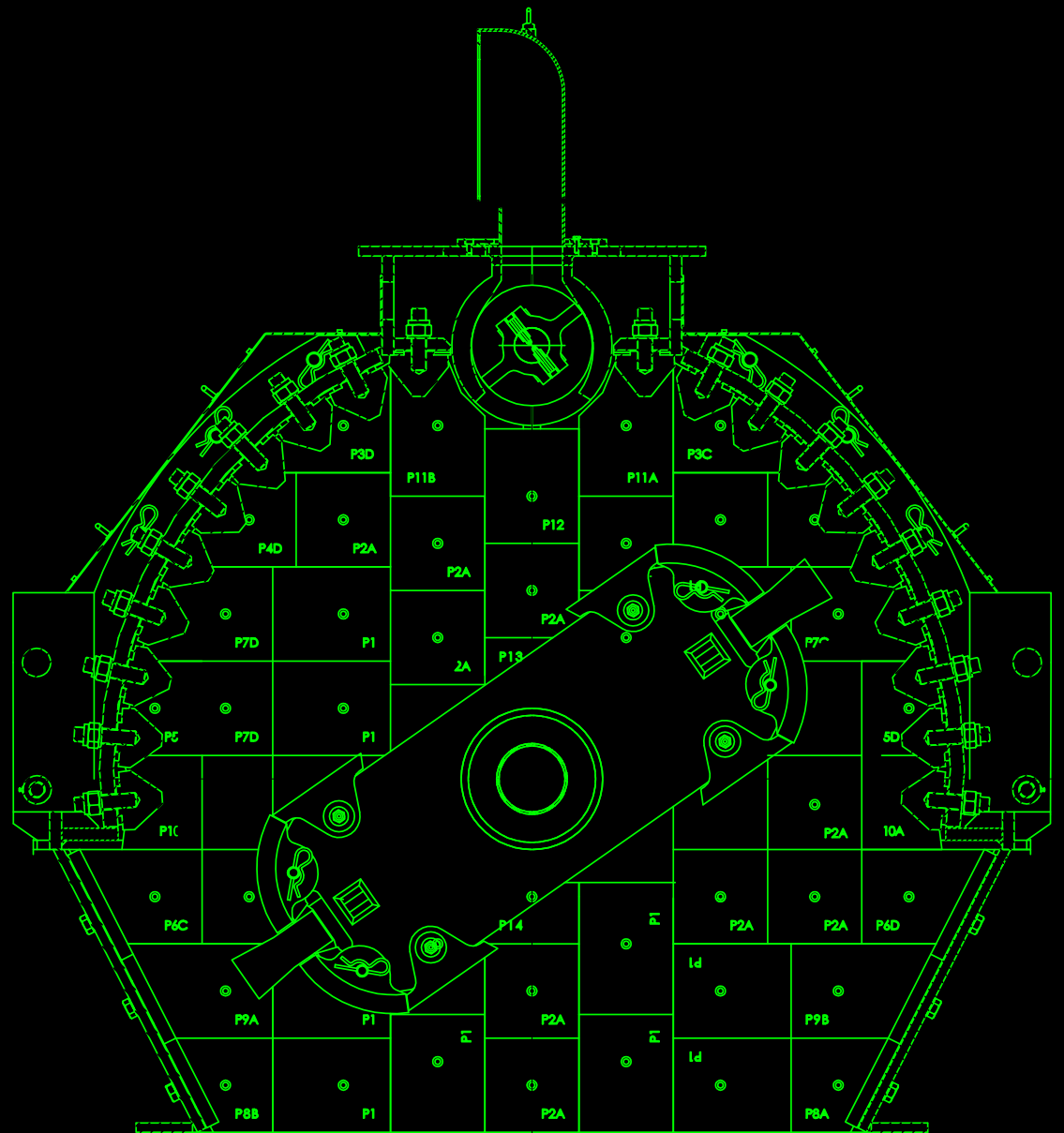
OUTPUT- Single Pass

85 - 100% USEABLE SAND



# Why It Works

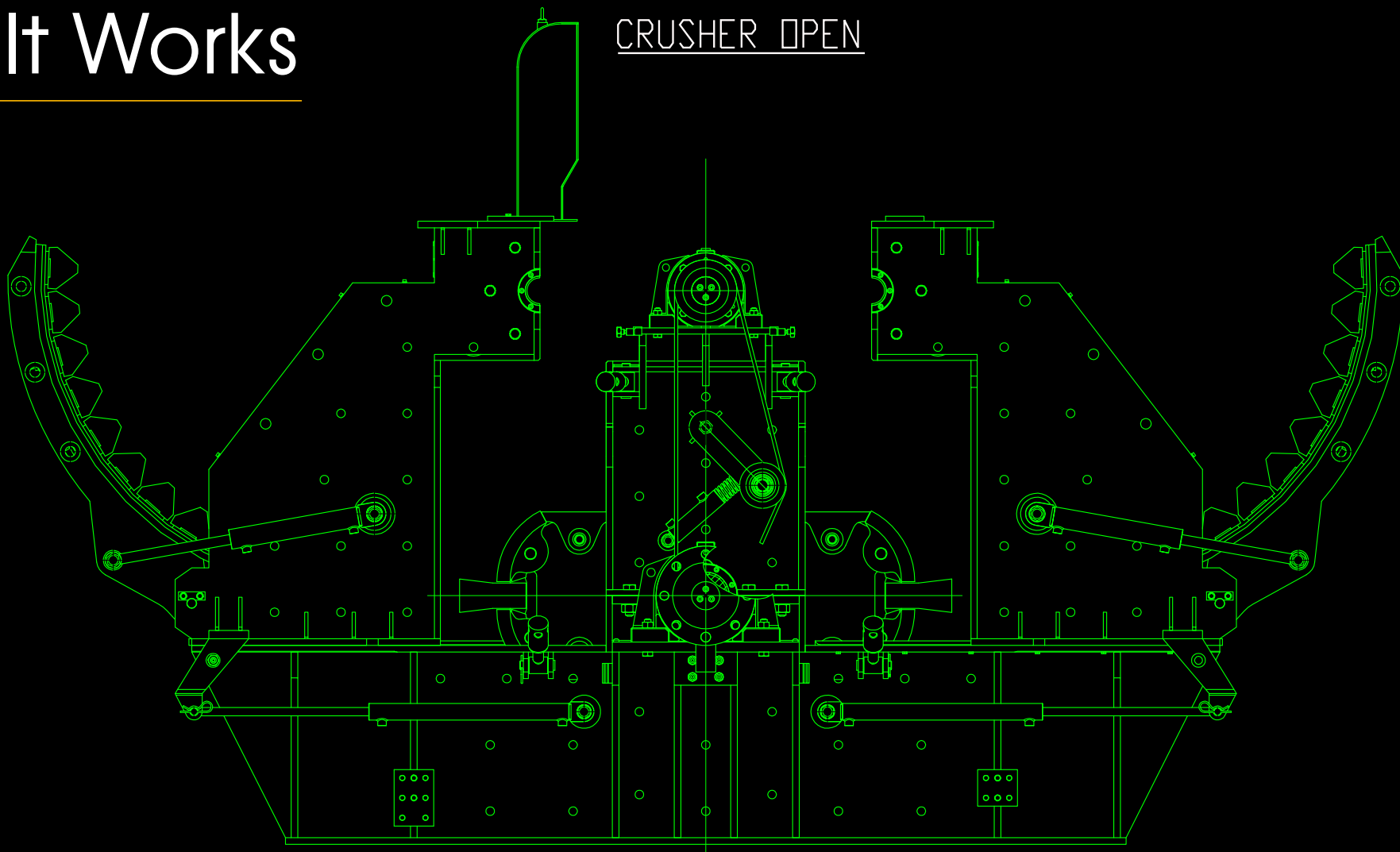
SIMPLICITY  
&  
INNOVATION



# Why It Works

---

CRUSHER OPEN

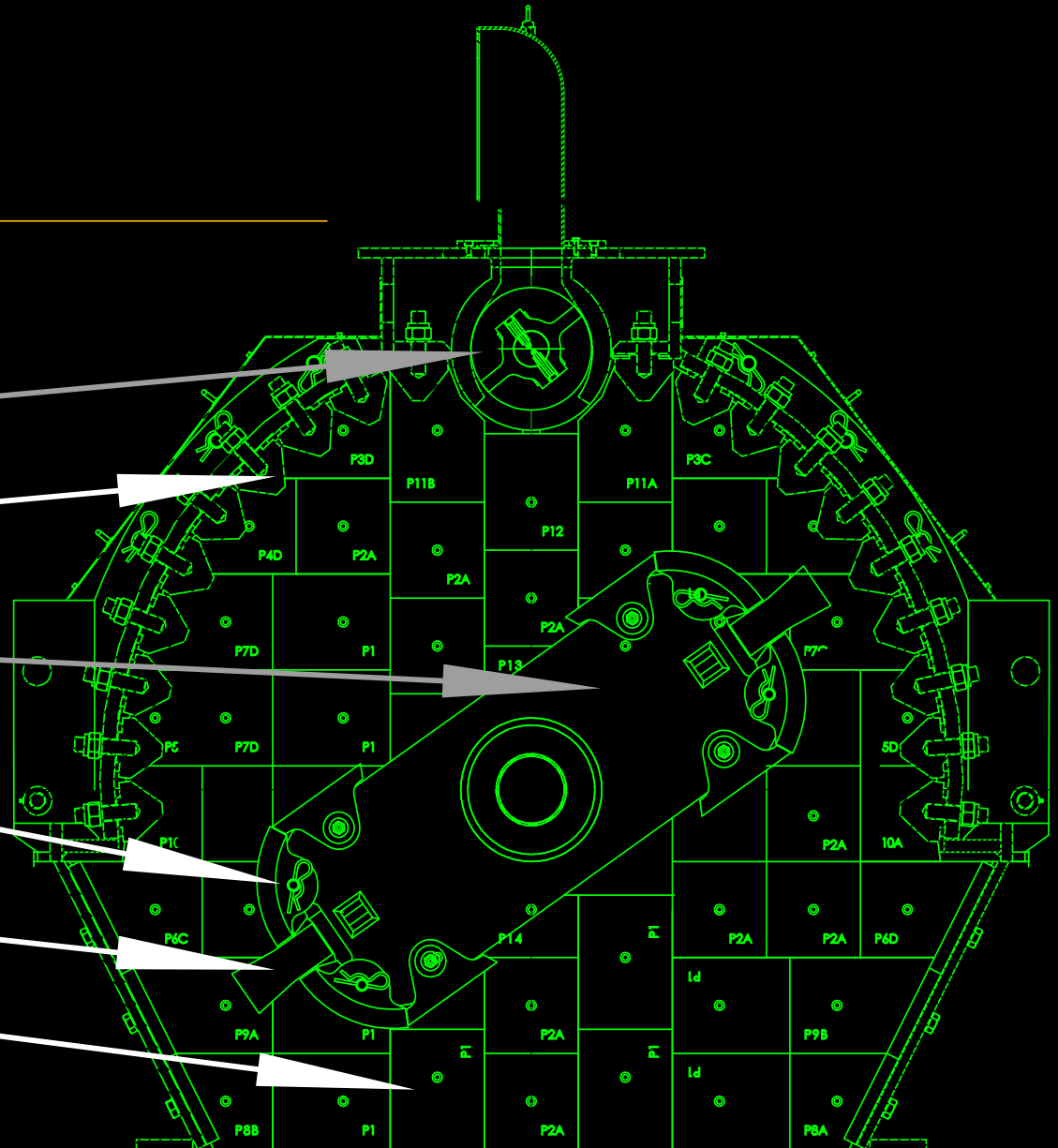




# Why It Works

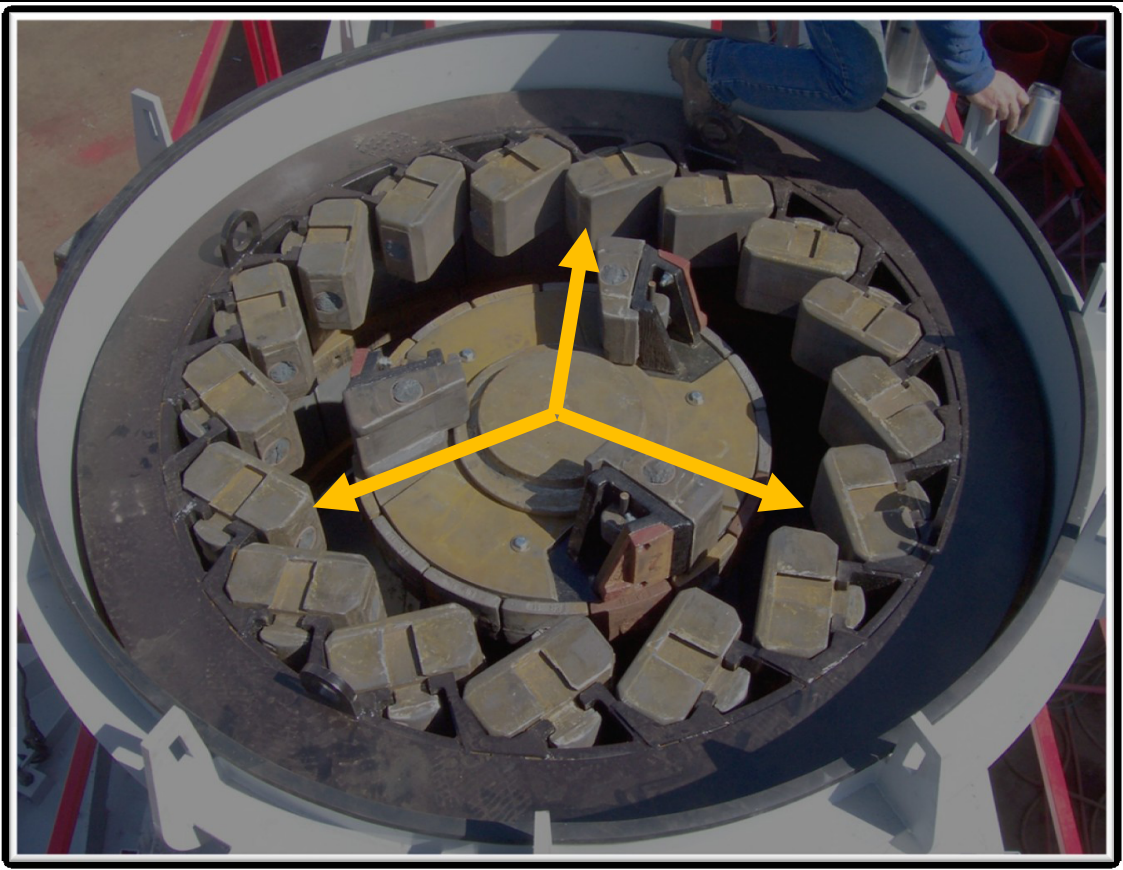
---

- Distributor
- Apron Liners (20)
- Elliptical Rotor
- Shrouds (4)
- Blow Bars (2)
- Side Liners



# VSI vs Rocky Transformer

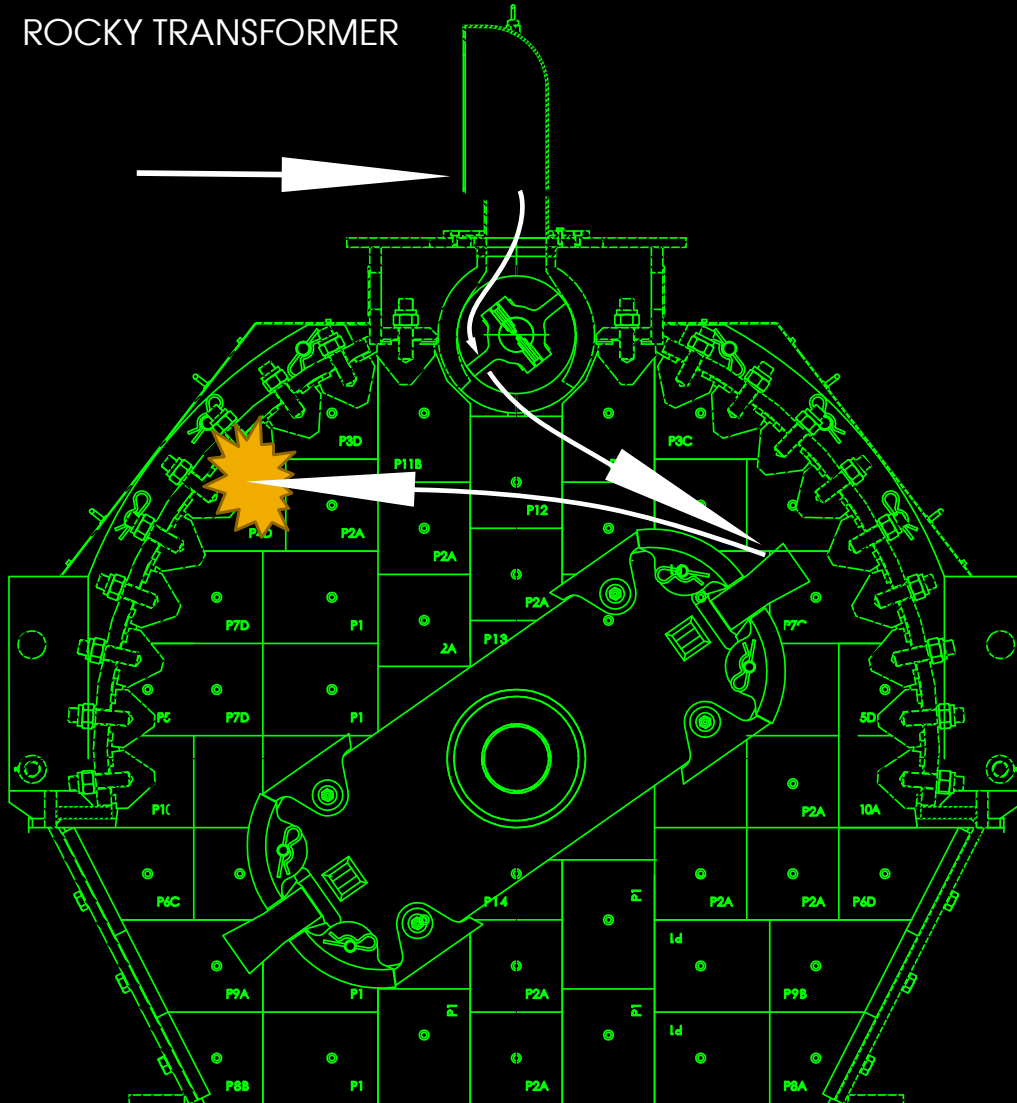
Typical VSI Crusher



- VSI'S use centrifugal force to pull material outward across the shoes.
- This sliding motion of material is extremely abrasive on the surface of the wear parts.
- A regular maintenance schedule of a VSI typically requires changing out the entire table worth of parts (17 anvils and 3 shoes on this machine)
- Proportion between feed material and usable crushed product in a single pass:  
VSI 50% - ROCKY 90%

# VSI vs Rocky Transformer

ROCKY TRANSFORMER



- The Rocky uses an accelerated impact crushing process.
- Material is thrown into the approaching blowbars on the main rotor.
- The result is a near 90 degree impact.
- The Rocky's wear parts maintenance schedule is in function of material crushed and condition of the blow bars.



# The Brains Behind the Brawn

- The Rocky has two onboard motor inverters
- Independently controls the speed of the rotor and the speed of the infeed belt.
- By adjusting both the crushing AMP's and the Rotors RPM's, gradation of output can be fine tuned.

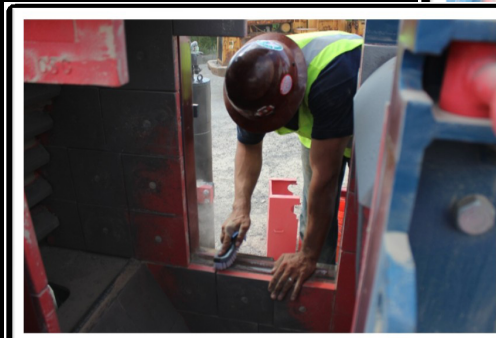




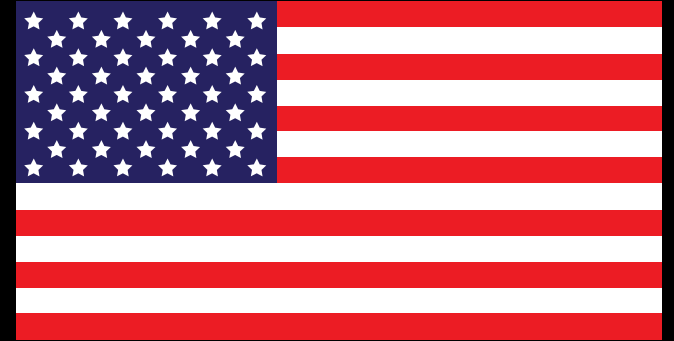
# Highlights

---

- High Efficiency
- Easy Maintenance
- Low Operating Costs
- Longer Wear Life of Parts



# Rocky Sample Gradations



- Colorado Sample 

- 3/8" minus feed

Post Crush

- Alluvial Deposit

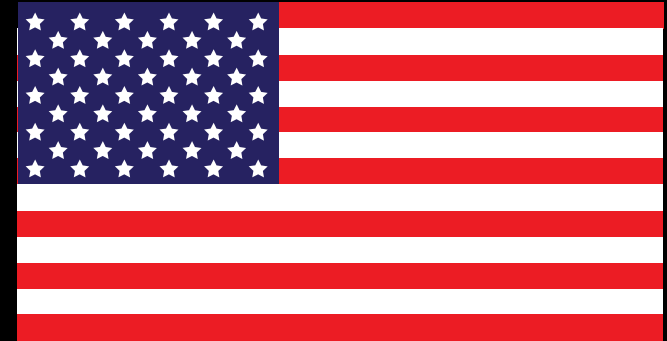
780 RPM 800 RPM 850 RPM

- Sieve % Passing

%Passing % Passing% Passing

• 1/4"	100.00	-	-	-
• #4	91.00	99.60	99.70	100.00
• #8	42.00	90.40	93.60	98.40
• #16	11.00	63.80	70.30	87.40
• #30	-	39.00	44.40	63.20
• #50	-	22.20	25.50	37.40
• #100	-	11.80	13.50	19.40
• #200	0.10	5.80	5.90	8.00

# Rocky Sample Gradations



- Texas PreCrush 

- 3 / 8" minus feed

Post Crush

- River Rock

950 RPM

- | Sieve | % Passing |
|-------|-----------|
|-------|-----------|

% Passing
-----------

- |        |        |
|--------|--------|
| • 1/2" | 100.00 |
|--------|--------|

-
---

- |        |       |
|--------|-------|
| • 3/8" | 95.30 |
|--------|-------|

-
---

- |      |       |
|------|-------|
| • #4 | 18.50 |
|------|-------|

100.00
--------

- |      |      |
|------|------|
| • #8 | 0.70 |
|------|------|

53.70
-------

- |       |     |
|-------|-----|
| • #16 | 0.1 |
|-------|-----|

31.50
-------

- |       |   |
|-------|---|
| • #30 | - |
|-------|---|

19.30
-------

- |       |   |
|-------|---|
| • #50 | - |
|-------|---|

11.40
-------

- |        |   |
|--------|---|
| • #100 | - |
|--------|---|


6.90
------

- |        |   |
|--------|---|
| • #200 | - |
|--------|---|

4.10
------

- |       |   |
|-------|---|
| • Pan | 0 |
|-------|---|

# Rocky Sample Gradations

- Viterbo ( Vt ) Sample 
- 16/30 mm. Minus feed
- Basalt Deposit

Post Crush  
1170 RPM



Sieve	% passing	% retained progressive
• 10 mm.	100	
• 8 mm.	98,58	1,42
• 6,3 mm.	96,35	3,65
• 5 mm.	92,58	7,42
• 4 mm.	88,93	11,07
• 2 mm.	67,93	32,07
• 1 mm.	43,97	56,03
• 0,5 mm.	28,18	71,82
• 0,25 mm.	18,14	81,86
• 0,0125 mm.	10,49	89,51
• 0,063 mm.	6,2	93,8
• < 0,063 mm.	0	100



# Rocky Sample Gradations

- Faloppio ( Co ) Sample
- 2/4 4/8 mm. Minus feed
- Limestone Deposit



Post Crush  
1100 RPM

Sieve	% passing	% retained progressive
• 10 mm.		
• 8 mm.		
• 6,3 mm.		
• 5 mm.	100	
• 4 mm.	97,22	2,78
• 2 mm.	74,07	25,93
• 1 mm.	48,61	51,39
• 0,5 mm.	33,33	66,67
• 0,25 mm.	22,69	77,31
• 0,0125 mm.	14,49	85,51
• 0,063 mm.	8,33	91,67
• < 0,063 mm.	0	100



Sede Legale e Operativa:  
65015 MONTESILVANO (PE) - Zona Ind.le - Via Danubio, snc  
Tel. +39.085.4682109 - Fax +39.085.4683209  
[rafspa.it](http://rafspa.it) - [info@rafspa.it](mailto:info@rafspa.it)

